

## **Previous Report**

### **Promoter Mesoesthetic**

Responsible Researcher  
Centre Laser Dermatologique  
3 Bd Lord duveen  
13008 Marseille  
FRANCE

Complementary researcher  
Delphine Forestier  
Research assistant

Email : [laserder@jeanluclevy.com](mailto:laserder@jeanluclevy.com)  
Internet : [www.centrelaser.fr](http://www.centrelaser.fr)

Centre Laser Dermatologique  
3 Bd Lord Duveen 13008 Marseille  
Tel : 0033496203440  
Fax : 0033496203449

## **Study attach**

### **Objectives**

- To evaluate the cosmetic efficiency of a cosmetic product applied by a electrophoroporation system focused to reduce :
- The unsightly cellulite.
  - The unsightly expression lines
  - The unsightly stretch

### **Investigation Methods**

Clinic study under dermatologic control

### **Methodology**

Open Study

Volunteers; 12, Female, between 20 and 55 years

#### **Inclusion criteria**

- Thigh symmetric localised muddles, normal weight without variation during the study.
- Expression lines with low deep sun aging sign
- Dehiscent, corrugated, non hollow and normochrome stretch in case of patients who have been pregnant at least 2 years before the study was made

Photographic evaluation according to a clinic score

### **Study period**

From 15 of June 2005 to 15 of September 2005

### **Study type**

Cosmetic study without medical observation purpose  
(Finished product used according to their indications)

With employment of non invasive biometrologic methods

Email : [laserder@jeanluclevy.com](mailto:laserder@jeanluclevy.com)  
Internet : [www.centrelaser.fr](http://www.centrelaser.fr)

Centre Laser Dermatologique

3 Bd Lord Duveen 13008 Marseille  
Tel : 0033496203440  
Fax : 0033496203449

As the Director of laser scientific centre, Dr Levy made himself responsible to take care that the individual approval signed will be confidentially conserved.

### **1. Inclusion criteria**

This study has concerned 20 volunteers, males and females, from 18 to 55 years old.

Concerning the cellulite and the stretch:

Volunteers had either a normal weight or not higher than 10 % of the weight considered as normal allow for their height according to the insurance code table.

Volunteers showed symmetric cellulite affection in both thighs.

To avoid variations due to the premenstrual syndrome, selected volunteers were either under oral contraception or in a date out of the premenstrual period.

### **2. Exclusion criteria**

The exclusion criteria have been the ones we usually use for cosmetic studies:

Patients suffering from a evolutive allergic episode,

The patient who suffer from immunodepression

Patient on immunodepressive medications

They were also excluded patient who suffer from a known evolutive pathology at the moment of the entry in the study, either a general pathology or cutaneous one, and especially if it is related to topic dermatitis.

At last, as it made it a rule, all the pregnant and breast-feeding women or women who had a childbirth less than two years ago were excluded.

### **3. Cutaneous features**

Age and Sex: The patients entering in the study were 20 female with one man for the expression line indication, from 20 to 54 years old, with a mean of 35,5.

#### **THE AGE REPARTITION GROUP**

From 21 to 30 : 2 patients

From 31 to 40 : 6 patients

From 41 to 50 : 4 patients

Email : [laserder@jeanluclevy.com](mailto:laserder@jeanluclevy.com)

Internet : [www.centrelaser.fr](http://www.centrelaser.fr)

Centre Laser Dermatologique

3 Bd Lord Duveen 13008 Marseille

Tel : 0033496203440

Fax : 0033496203449

51 and more : 2 patients

#### SKIN COLOUR

Light: 6 patients

Medium: 4 patients

Brown: 4 patients

#### FACIAL SKIN TYPE

Senescent dehydrated: 2 patients

Dry : 2 patients

Mixt : 6 patients

Oily : 1 patient

#### CUTANEOUS REACTIVITY

Normal: 12 patients

Erythrorosacea: 2 patients

#### PHOTOTYPE

II: 4 patients

III: 4 patients

IV: 6 patients

### **A. Body Cellulitic Zone Features**

#### THE BODY SKIN MOITSURIZING

Normal in general: 4 patients

Normal except for the inferior member: 2 patients

Bad quality: 0 patient

Atopic type or very dry: 0 patient

#### CELLULITIC NODDLE (classification annex enclosed)

Type 1	4
Type 2	2
Type 3	0
Type 4	0

MAJORITY LOCATION: we only have treated the thigh location

Thigh + hip : 3 patients

Flabby thighs : 1 patient

Thigh + hip + bottom : 0 patient

Thigh + hip : 2 patients

Email : [laserder@jeanluclevy.com](mailto:laserder@jeanluclevy.com)

Internet : [www.centrelaser.fr](http://www.centrelaser.fr)

Centre Laser Dermatologique

3 Bd Lord Duveen 13008 Marseille

Tel : 0033496203440

Fax : 0033496203449

## **B. Stretch Zone Features**

Evaluation by measuring the mean width in a same patient (measure thanks a caliber in the median zone of the stretch)

The colour hasn't been considered because the whole stretch selected were white (either pearly or not)

## **C. Photoaging:**

Score used: clinic score photoaging according to Weiss ( see Annexe 1)

Grade I: 3 patients

Grade II: 1 patient

Grade III: 0 patient

## **PRODUCTS AND MATERIAL USED:**

Session duration: 20 minutes

Number of session done: 10 sessions complete according to indications = 2 / week

Cellulite: Orange skin without slimming

Caffeine

Artichoke leaf extract ( Cynara scolimus)

Phosphatidylcholine

Organic silicon

In stable excipient Mesogel applied to the skin by the TMT System (electrophoroporation System)

Maximum intensity tolerated during the first session: 44%

Maximum intensity tolerated during the last session: 64%

Number of patients treated: 6

Stretch.:

Ascorbic acid

amino acid hydroxyproline

Centella extract

Hyaluronic acid

Email : [laserder@jeanluclevy.com](mailto:laserder@jeanluclevy.com)

Internet : [www.centrelaser.fr](http://www.centrelaser.fr)

Centre Laser Dermatologique

3 Bd Lord Duveen 13008 Marseille

Tel : 0033496203440

Fax : 0033496203449

In stable excipient Mesogel applied to the skin by the TMT System  
(electrophoroporation System)

Maximum intensity tolerated during the first session: 46%

Maximum intensity tolerated during the last session: 65%

Number of patients treated: 6

Photoaging:

Ascorbic acid

Acetilhexapeptido-3

Hyaluronic acid

In stable excipient Mesogel applied to the skin by the TMT System  
(electrophoroporation System)

Maximum intensity tolerated during the first session: 54%

Maximum intensity tolerated during the last session: 74%

Number of patients treated: 4

Email : [laserder@jeanluclevy.com](mailto:laserder@jeanluclevy.com)

Internet : [www.centrelaser.fr](http://www.centrelaser.fr)

Centre Laser Dermatologique

3 Bd Lord Duveen 13008 Marseille

Tel : 0033496203440

Fax : 0033496203449

**Statistics results :**

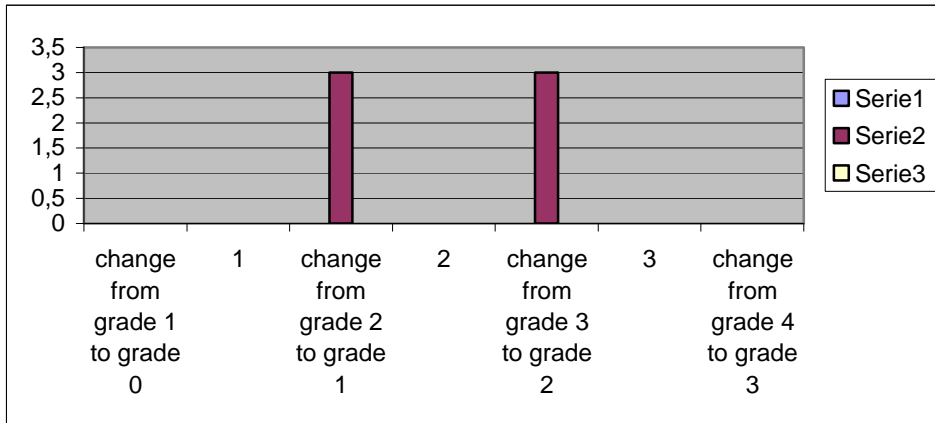


table 1 : cellulite series

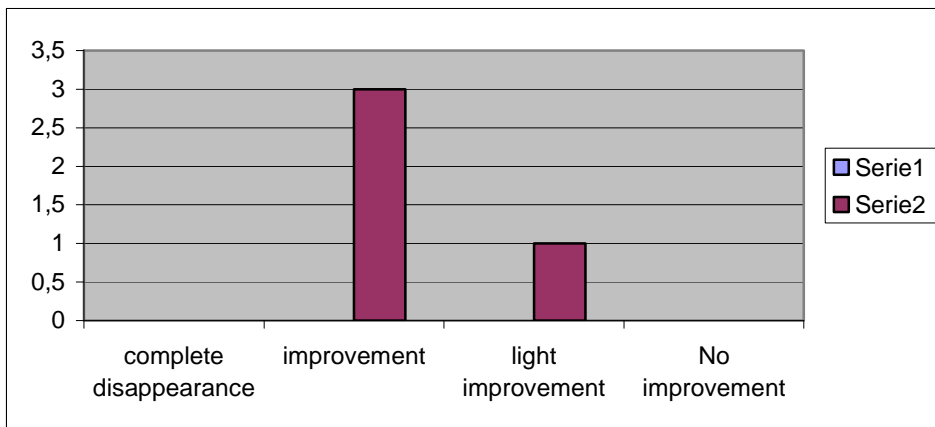


table 2 : Stretch series

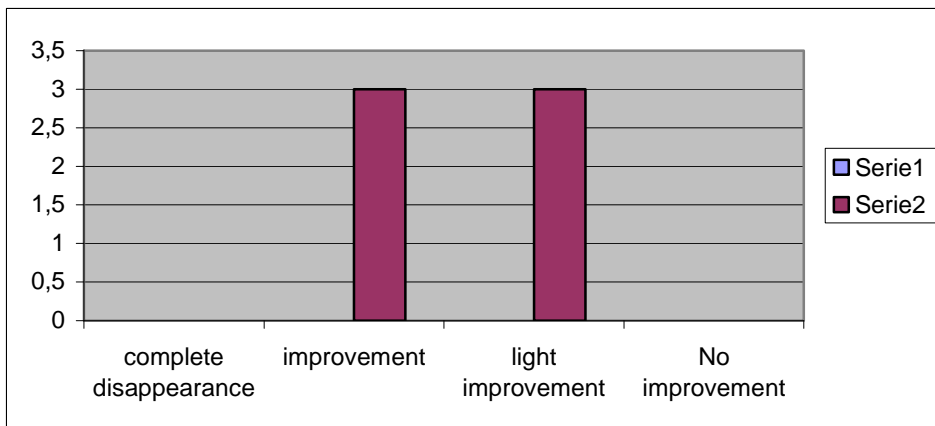


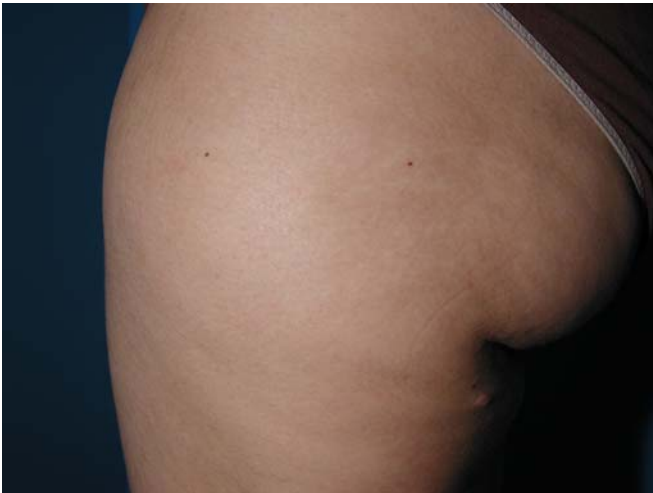
table 3 : Photoaging series

## Clinic Exemples :

Cellulite :



before



after 10 sessions

Email : [laserder@jeanluclevy.com](mailto:laserder@jeanluclevy.com)  
Internet : [www.centrelaser.fr](http://www.centrelaser.fr)

Centre Laser Dermatologique

3 Bd Lord Duveen 13008 Marseille  
Tel : 0033496203440  
Fax : 0033496203449



Stretch :



before



after 10 session

Email : [laserder@jeanluclevy.com](mailto:laserder@jeanluclevy.com)

Internet : [www.centrelaser.fr](http://www.centrelaser.fr)

Centre Laser Dermatologique

3 Bd Lord Duveen 13008 Marseille

Tel : 0033496203440

Fax : 0033496203449

Photoaging :



before



After 10 sessions

Email : [laserder@jeanluclevy.com](mailto:laserder@jeanluclevy.com)  
Internet : [www.centrelaser.fr](http://www.centrelaser.fr)

Centre Laser Dermatologique

3 Bd Lord Duveen 13008 Marseille  
Tel : 0033496203440  
Fax : 0033496203449

## **Preliminary conclusion**

Very easy to use.

Cellulite: improvement of the orange skin look with monotherapy without loose of weight.

Stretch: improvement of the rumpled appearance of the skin but not of the hollow.

Expression lines: improvement of the face tissue skin and the expression lines: texture, roughness and the complexion

It is a very serious competence of non ablative skin resurfacing in the photoaging.

It is performed without any difficulties by the assistant.

Efficient on the dermis and hypodermis with improvement of the epidermis.

Email : [laserder@jeanluclevy.com](mailto:laserder@jeanluclevy.com)

Internet : [www.centrelaser.fr](http://www.centrelaser.fr)

Centre Laser Dermatologique

3 Bd Lord Duveen 13008 Marseille

Tel : 0033496203440

Fax : 0033496203449

Annexe 1 :

### **Table 1. Cellulite Classification**

Grade 1 : None or minimal cellulite based on observation when standing, the pinch test, or gluteal muscle contraction.

Grade 2 : Irregular skin topography upon observation. Cellulite is enhanced by pinching or gluteal contraction. Subjects may have skin pallor or decreased temperature and sensation.

Grade 3 : Skin exhibits the classic orange peel dimpling at rest. Small subcutaneous nodularities may be palpated.

Grade 4 : In addition to the characteristics described above there is more severe puckering and palpable nodules.

### **Table 2. Descriptive scale of the overall cutaneous photoaging (additionally photographic examples) according to Weiss et al.**

1 Mild photoaging with fine wrinkling of the facial skin

2 Moderate photoaging with fine and coarse wrinkling and some hyperpigmentation of the facial skin

3 Severe photoaging with fine and coarse wrinkling, sallowness and some hyperpigmentation of the facial skin

Email : [laserder@jeanluclevy.com](mailto:laserder@jeanluclevy.com)  
Internet : [www.centrelaser.fr](http://www.centrelaser.fr)

Centre Laser Dermatologique

3 Bd Lord Duveen 13008 Marseille  
Tel : 0033496203440  
Fax : 0033496203449